

Half-note Symphony

This semi-circular lace shawl, in alternating wedges of two harmonious colors, features a fluted hem and scooped neckline turned back into an asymmetric collar.

Purl lace short-row wedges, separated by spokes of garter stitch bands, gradually narrow as they encircle the shawl.

Half-note Symphony Shawl is designed to be attractive on a range of sizes and body types. Because of the fluid, amorphous character of the purl lace, this “one size fits all” shawl can be further varied by the degree of tautness in the blocking process (from relaxed to extremely stretched).



Shown in Symphony Kid Lace with Beads & Glitter by Tilli Tomas, colors Atmosphere (light gray) and Eternal Diva (soft gray-blue)

Size 32" - 42" length at front+collar edges depending on degree of blocking

Yarn Lace or light fingering weight: 345 yards color A (gray) and 285 yards color B (blue), or your choice of colors

Gauge Approximately 10 - 13 stitches and 14 - 16 rows = 4" over blocked lace stitch

Needles US 8 / 5 mm; larger size needle for binding off

Other Notions

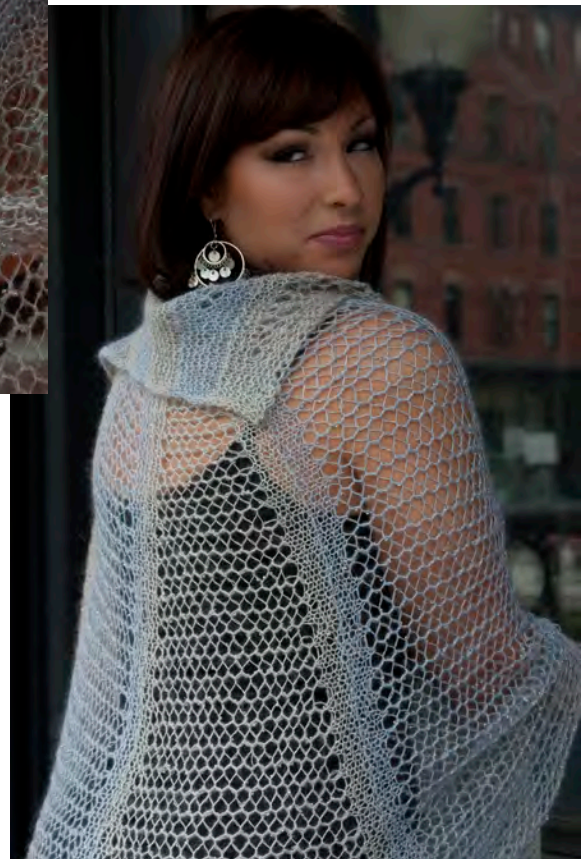
- Stitch marker
- Small crochet hook or tapestry needle for finishing ends
- Blocking board and rust-proof blocking wires/pins

Skill Level Easy; this would be a good entry-level project for an aspiring lace knitter, as well as something to interest more advanced knitters

Stitches Used knit, purl 2 stitches together, yarn over, slip, cast on, bind off

Construction Worked flat in rows, one piece, no sewing or grafting

Stitch Instructions Written (easy 2-stitch pattern)



Special Techniques Used and Described

- Yarn overs between purlled stitches
- Yarn over at beginning of row
- I-cord edge
- No-wrap short rows
- Changing colors with a slip stitch technique borrowed from tubular knitting